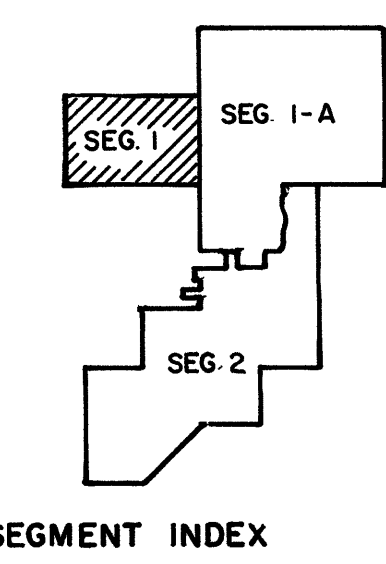
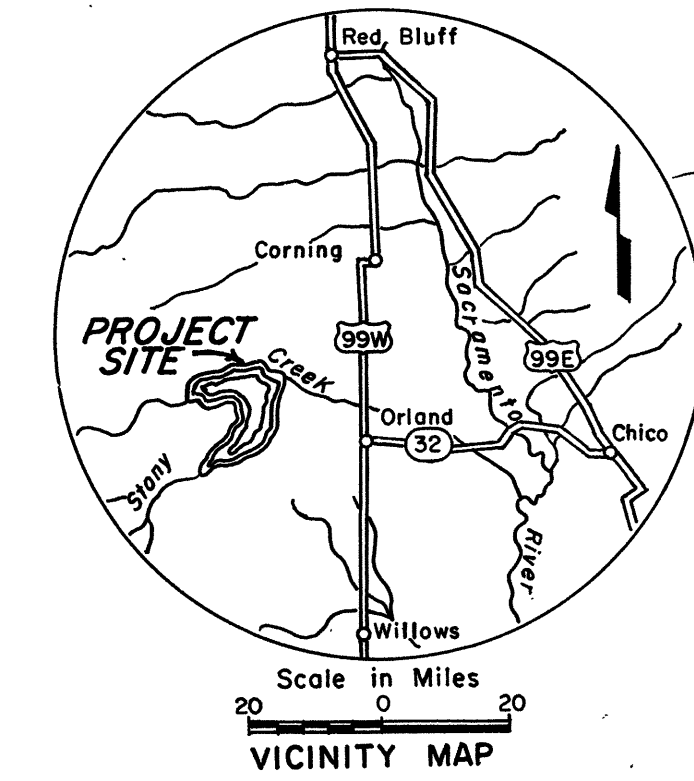
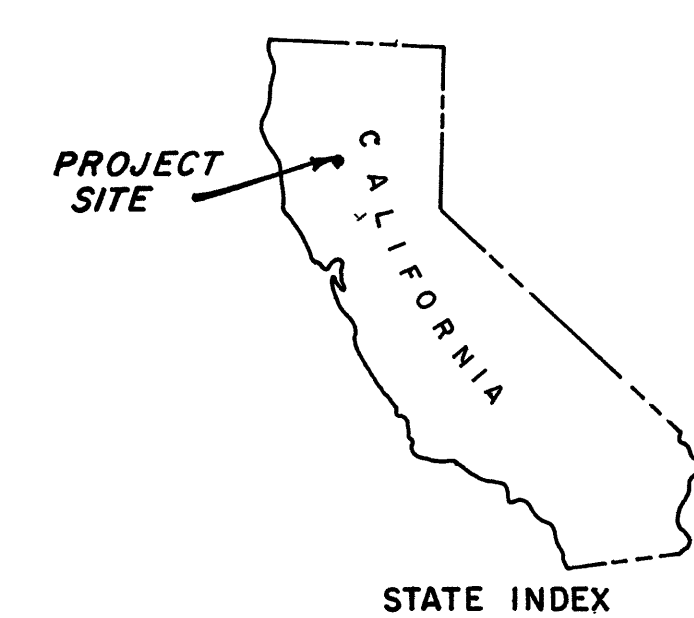
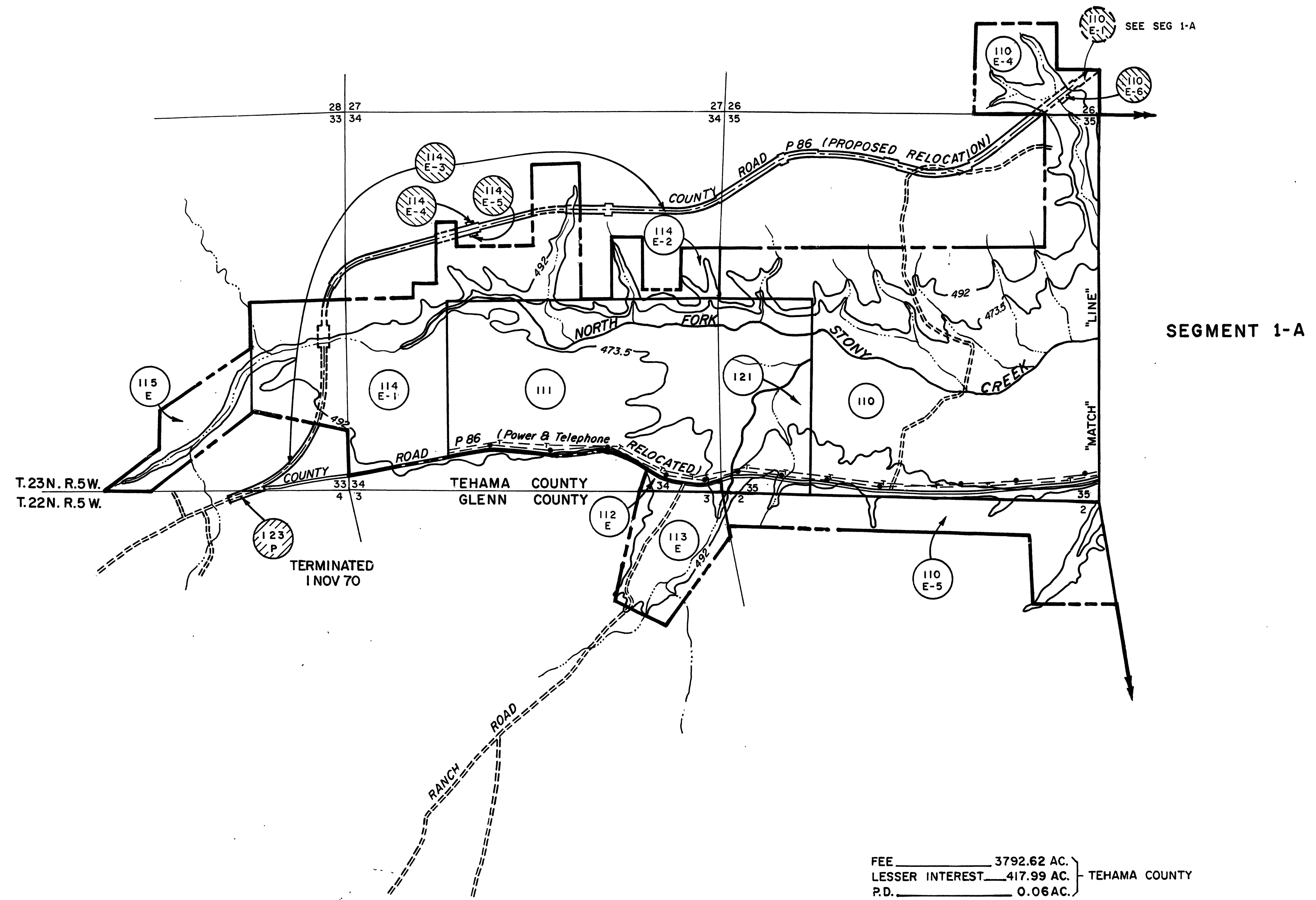


TRACT REGISTER					
TRACT NO.	LAND OWNER	ACREAGE			REMARKS
		FEE	EASMT	PERMIT	
110	CASA HAMILTON CORPORATION	893.10			D/T Civ. No. 8065 filed 30 Dec 1963; Final Judgement dated 11 Mar 1964
110E-4	CASA HAMILTON CORPORATION		40.87		Add'l 2.43 ac. included in Tr. 110E-1. Perpetual Flowage Eas. from 31 Oct. 60.
110E-5	CASA HAMILTON CORPORATION		80.80		Perpetual Flowage Eas. from 31 Oct. 60.
110E-6	CASA HAMILTON CORPORATION		0.00		Entire 0.07 ac. included in Tr. 110E-4. Perp. Drainage Eas. from 31 Oct. 60.
111	F. P. MASTERTON, ET AL	249.00			D/T Civ. No. 8339 filed 30 Dec 1963. Final Judgement dated 11 Mar 1964
112E	LEO A. PETRONAVE, ET AL		3.80		Perp. Flowage Eas. from 5 July 62.
113E	LEO A. PETRONAVE, ET AL		46.40		Perp. Flowage Eas. from 5 July 62.
114E-1	F. P. MASTERTON, ET UX		169.31		Add'l 6.75 ac. included in Tr. 114E-3. Perpetual Flowage Eas. from 31 Oct. 60.
114E-2	F. P. MASTERTON, ET UX		26.60		Perpetual Flowage Eas. from 31 Oct. 60.
114E-3	F. P. MASTERTON, ET UX		18.10		Perp. Eas. for Road R/W from 25 Mar. 60.
114E-4	F. P. MASTERTON, ET UX		0.05		Perp. Drainage Eas. from 31 Oct. 60.
114E-5	F. P. MASTERTON, ET UX		0.07		Perp. Drainage Eas. from 31 Oct. 60.
115E	LU E. SINE, ET UX		35.80		Perp. Flowage Eas. from 21 Jan. 65.
121	F. P. MASTERTON, ET AL	37.00			D/T Civ. No. 8339 filed 30 Dec 1963. Final Judgement dated 11 Mar 1964
123P	COUNTY OF GLENN			No Area	Permit for Road Junction from 17 Nov. '59.

1st Ind ENGLP to SPD dated 7 April 1959



FEE	3792.62 AC.	TEHAMA COUNTY
LESSER INTEREST	417.99 AC.	
P.D.	0.06 AC.	
FEE	4281.35 AC.	GLENN COUNTY
LESSER INTEREST	460.30 AC.	
P.D.	0.06 AC.	
P.D.	0.06 AC.	LAKE COUNTY
P.D.	0.06 AC.	COLUSA COUNTY

- 678 AC. CONSISTING OF 0.78 AC. EAS. (TR. 207E-1 & 207E-2) & 6.00 AC. FEE PORTION OF TR. 201, REPORTED EXCESS ON SF 118 TO GSA ON 1 NOV 79 WHO CONVEYED 0.78 AC TO FRANCES LORENE MASTERTON BY QCD DTD 5 DEC 80 AND 6.00 AC TO COUNTY OF GLENN, SUPERINTENDENT OF SCHOOLS BY DEED DTD 26 MAR 81.
- 0.33 ACRE EAS (TR 122E) CONVEYED TO COUNTY OF GLENN BY QCD DATED 27 OCT 72
- 80.87 ACRE EAS (13 TR'S 100E, 100E-2, 103E, 103E-2, 105E-1, 105E-2, 110E-1, 110E-6, 114E-3, 114E-4, 114E-5, 117E & 118E-2, CONVEYED TO COUNTY OF GLENN BY QCD DTD 10 MAY 71.
- 34.64 AC. EAS (6 TR'S 200E (6.21 AC.), 201E-2 (16.13 AC.), 201E-3 (5.47 AC.), 201E-4 (0.07 AC.), 203E-2 (2.45 AC. INCL. W/ACREAGE OF TR. 203E) & 206E (4.31 AC.) CONVEYED TO COUNTY OF GLENN QCD DTD 26 NOV 69.
- 0.06 ACRE BY USE PERMIT (1) RETRANSFERRED TO DEPT. OF AGRICULTURE FOREST SERVICE ON 18 JUN 65

FINAL PROJECT MAP

DEPT. OF THE ARMY
 USING SERVICE U.S. ARMY, CORPS OF ENGINEERS
LOCATION OF PROJECT
 STATE CALIFORNIA
 COUNTY GLENN, TEHAMA, LAKE, & COLUSA
 DIVISION SOUTH PACIFIC
 DISTRICT SACRAMENTO
 ARMY AREA 6 TH
 9 MILES NW OF ORLAND (GLENN CO.)
 MILES OF

TRANSPORTATION FACILITIES

RAILROADS

STATE ROADS 32

FEDERAL ROADS 99W & 99E

AIR LINES

AUDITED ACQUISITION

TOTAL ACRES ACQUIRED 8,953.44

FEE 8,056.64

PUBLIC DOMAIN WITHDRAWAL USE PERMIT 0.30

USE PERMIT (OTHER THAN P. D.)

TRANSFER FEE 17.33

LEASE 0.88

LESSER INTERESTS EASMT (36) 878.29 PER. (2) NO AREA

DISPOSAL

TOTAL ACRES DISPOSED OF 123.56*

SOLD FEE 6.00

PUBLIC DOMAIN WITHDRAWAL USE PERMIT 0.06

USE PERMIT (OTHER THAN P. D.)

TRANSFERRED

LEASES TERMINATED 0.88

LESSER INTERESTS TERM. EASMT (2) 116.62 PERMIT (2) NO AREA

REASSIGNED

OTHER

* TOTALS DO NOT INCLUDE 0.15-AC. DISPOSED OF AS LEAS. REACQUIRED BY EASEMENT.

LEGEND

EXCEPT FOR THE SPECIAL SYMBOLS SHOWN BELOW MAP SYMBOLS ARE STANDARD IN ARMY MAP SERVICE TECHNICAL MANUAL NO. 23.

RESERVATION LINE

RESERVATION LINE (Actual Survey)

TRACT BOUNDARY LINE

TRACT NUMBER 100

CONTOUR LINE

DISPOSAL

EXTENDED OWNERSHIP LINE

ACQUISITION AUTHORIZATION

Public Law No. 534 dtd. 22 Dec. 1944

1st Ind ENGLP to SPD dtd. 7 Apr. 1959

2nd Ind ENGR-AP to SPD dtd. 5 Oct 1962

2nd Ind ENGR-AP to SPD dtd. 28 Feb 1964

SEGMENT 1

DEPARTMENT OF THE ARMY
 OFFICE OF THE SACRAMENTO DISTRICT ENGINEER
 SOUTH PACIFIC DIVISION

REAL ESTATE

BLACK BUTTE LAKE

DATE 26 JAN. 70

APPROVED BY: *[Signature]*

OFFICE CHIEF OF ENGINEERS, WASHINGTON 25, D. C.

AUDITED

INSTALLATION OR PROJECT NO. L2-2-0008

SHEET 1 OF 3 DRAWING NO. SC-1-12-143

DATE	REVISIONS	BY
20 NOV 67	Supplemental Audit	WMD
24 Jun 85	Due to Supplemental Audit	KLA
17 Nov 81	Added disposal data (0.78 Ac Tr 207E-1, E-2, 6.00 Ac per Tr 201)	JSM
22 Sep 78	Disposed Tr's 110E-6, 114E-3, 114E-4, 114E-5	G.C.
7 Sep 73	Disposed Tr's 200E, 201E-2, 201E-3, 201E-4, 201E-2, & 206E	BWM
9 DEC 72	DISPOSED TR 122E	BWM
22 FEB 71	DISPOSED TR 123P, NAME CHANGE PER ENG DIV MEMO 258	I.C.G.
13 FEB 70	DUE TO FINAL AUDIT	I.O.G.
M		